

# East Greenwich Public Schools District-Wide Improvement Project

TOWN INFORMATIONAL SESSION

November 12<sup>th</sup>, 2025



THE RIGHT CHOICE IN PROJECT MANAGEMENT



CONSIGLI

Est. 1905

# AGENDA

## PROJECT INTRODUCTION

1. Owner + Design / Construction Teams

## DESIGN / CONSTRUCTION PROJECT OVERVIEW

1. Frenchtown Elementary School
2. Hanaford Elementary School
3. East Greenwich High School
4. Meadowbrook Elementary School

## HELPFUL TOOLS

1. District Wide Project Website

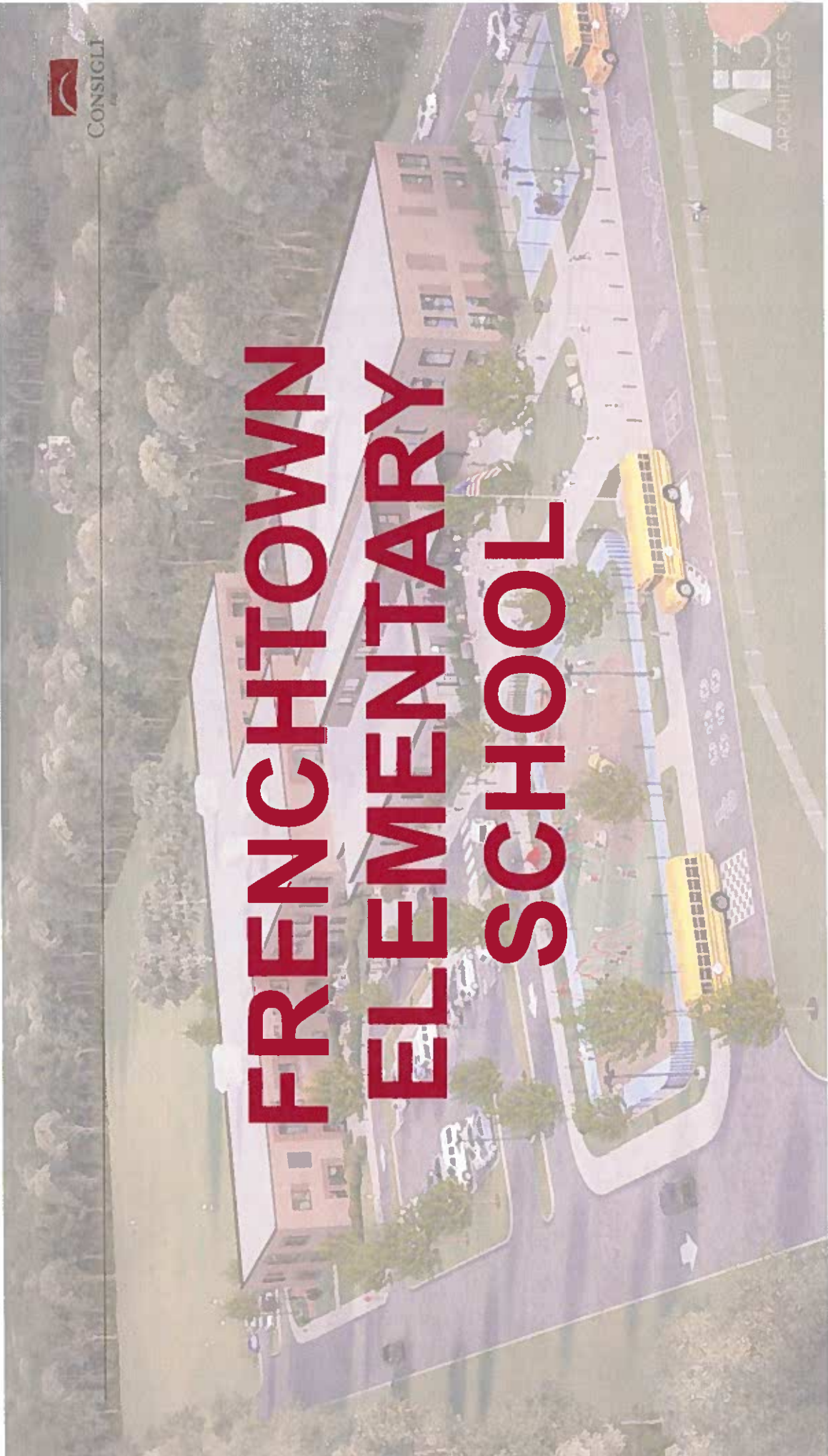
## Q&A SESSION





CONSIGLI

# FRENCHTOWN ELEMENTARY SCHOOL



# Frenchtown Elementary

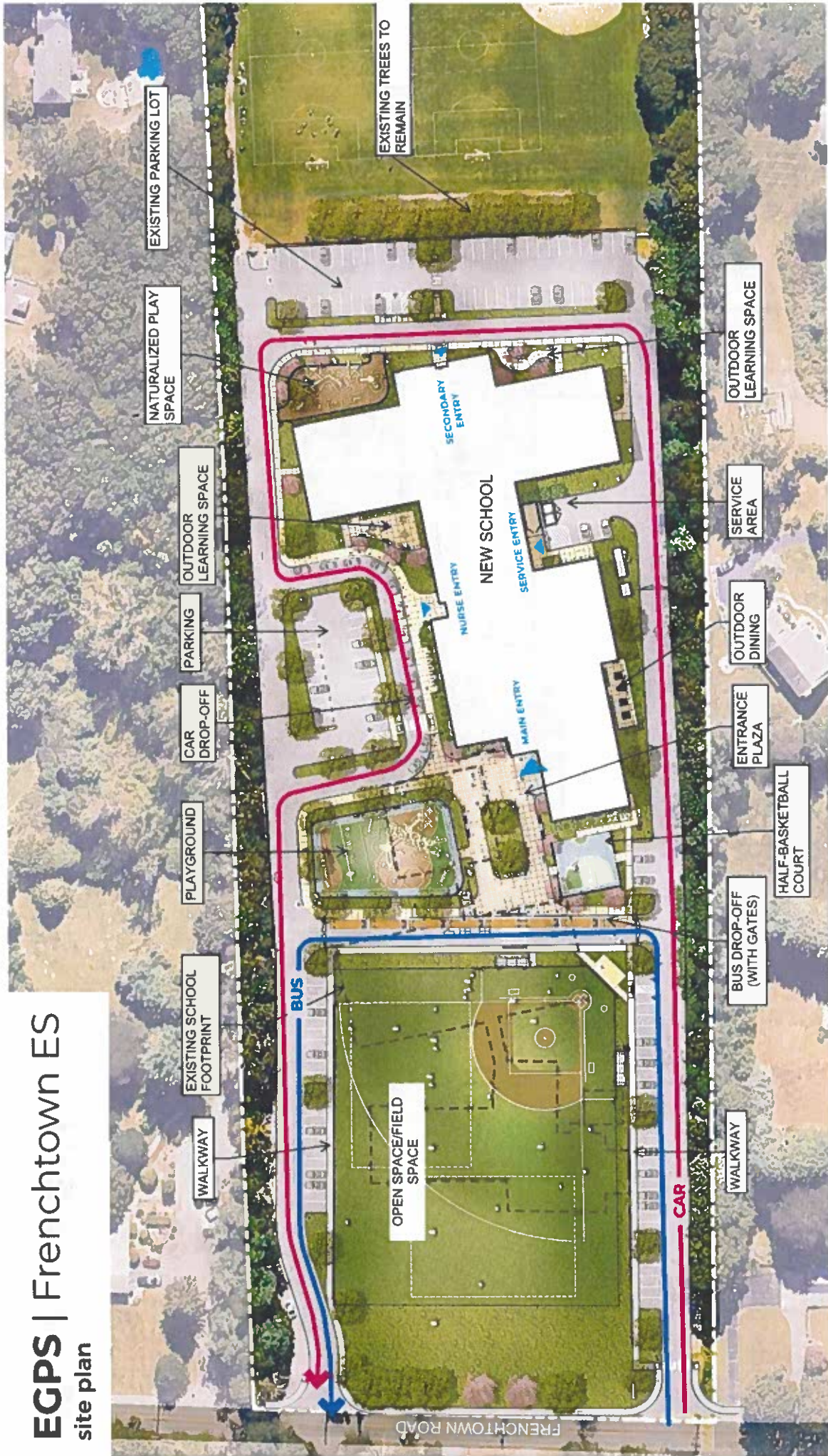
## NEW CONSTRUCTION FOR 5-TRACK ELEMENTARY SCHOOL

- New school building is approximately 78,392 square feet
- Existing school is approximately 43,000 square feet
- 2-level structure
- Accommodates 1<sup>st</sup> thru 5<sup>th</sup> Grade
- Frenchtown and Hanaford are mirror images



# EGPS | Frenchtown ES

## site plan



# EGPS | Frenchtown ES

## first floor plan

- CORE ACADEMIC
- SPECIAL EDUCATION
- HEALTH & PHYSICAL EDUCATION
- MEDIA CENTER
- ART & MUSIC
- STEAM & MAKER SPACE
- ADMINISTRATION & GUIDANCE
- MEDICAL
- DINING & FOOD SERVICE
- CUSTODIAL & MAINTENANCE
- CIRCULATION





**EGPS | Exterior Renderings**  
Frenchtown ES Main Entry



**EGPS** | Exterior Renderings  
Frenchtown Academic Wing



**EGPS | Interior Renderings**  
Frenchtown ES Main Lobby & Student Commons



**EGPS | Interior Renderings**  
Frenchtown ES Media Center



# Frenchtown Elementary – Mobilization / Milestones

- **Mobilization – Winter Break '25**
  - Jobsite fence will be installed during Winter break '25
  - Jobsite enabling phase begins the week of January 5<sup>th</sup>
- **Excavation & Foundations – January '26 – May '26**
- **Structure & Façade - April '26 – November '26**
- **Interior Fitout – August '26 – May '27**
- **Building Turnover – July '27**
- **Demolition – July '27 – December '27**
- **Fields & Hardscape – December '27 – June '28**
- **Project Complete – June '28**



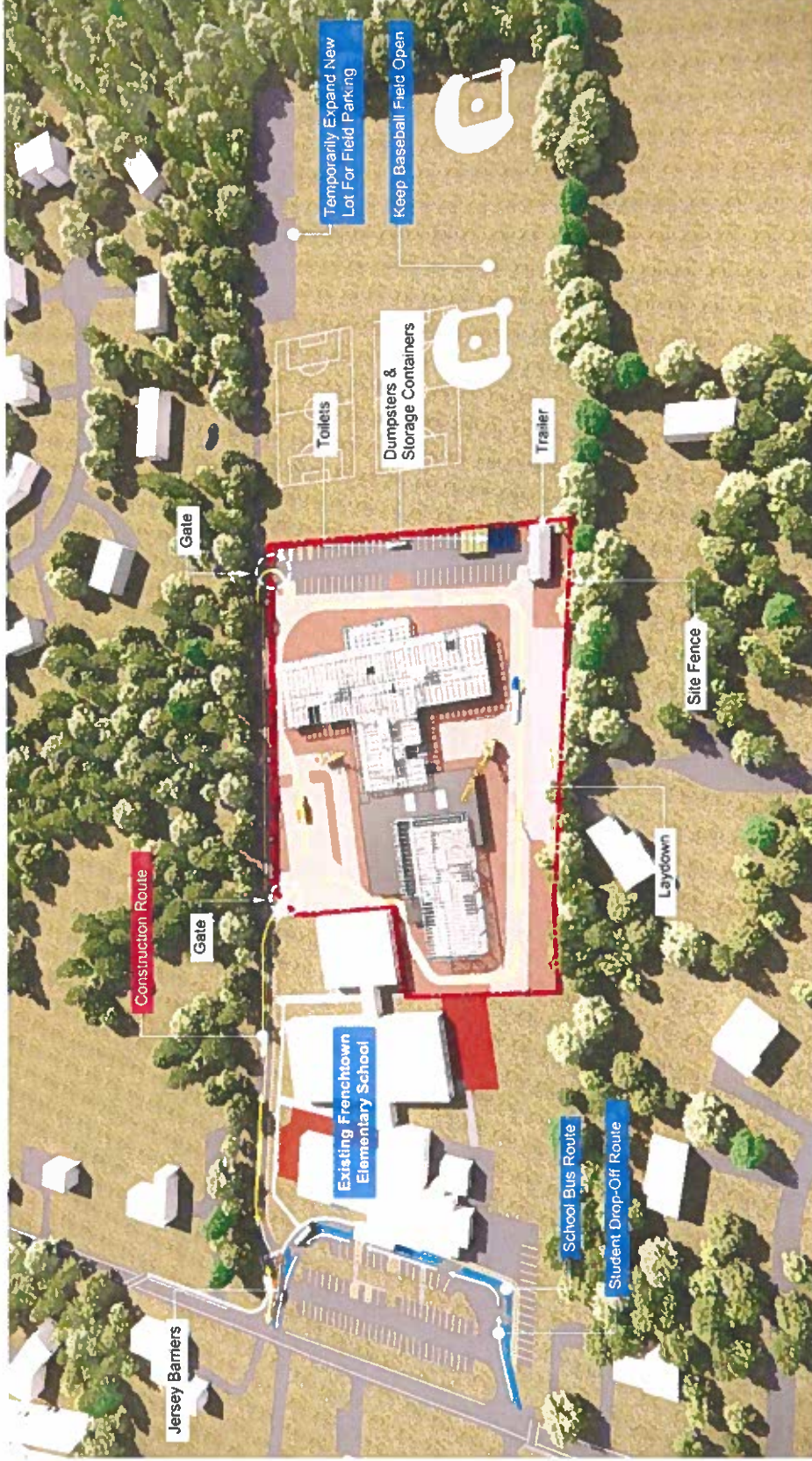
# Frenchtown Elementary - Mobilization

Dec '25



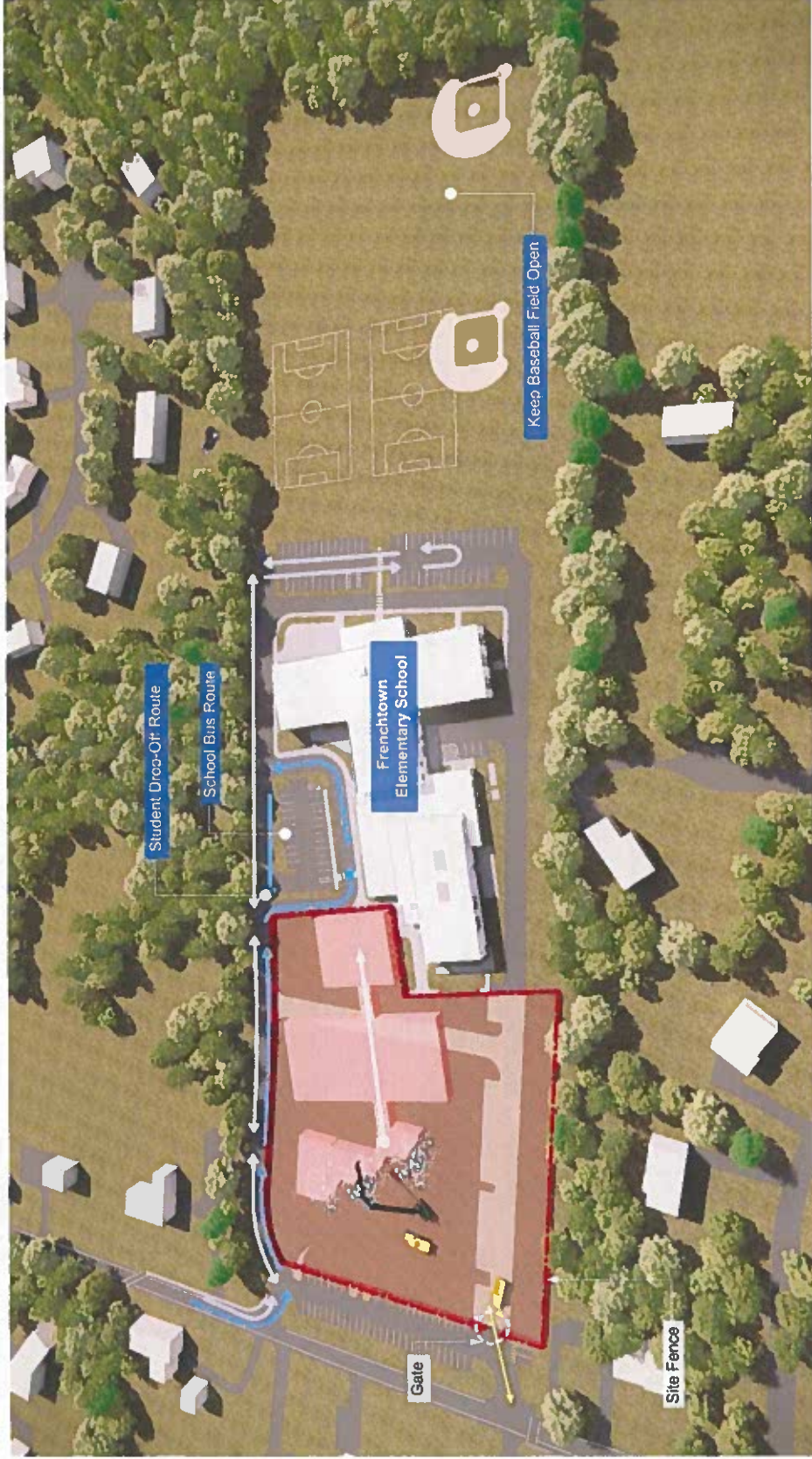
# Frenchtown Elementary - Structure & Fitout

Jan '26 – May '27



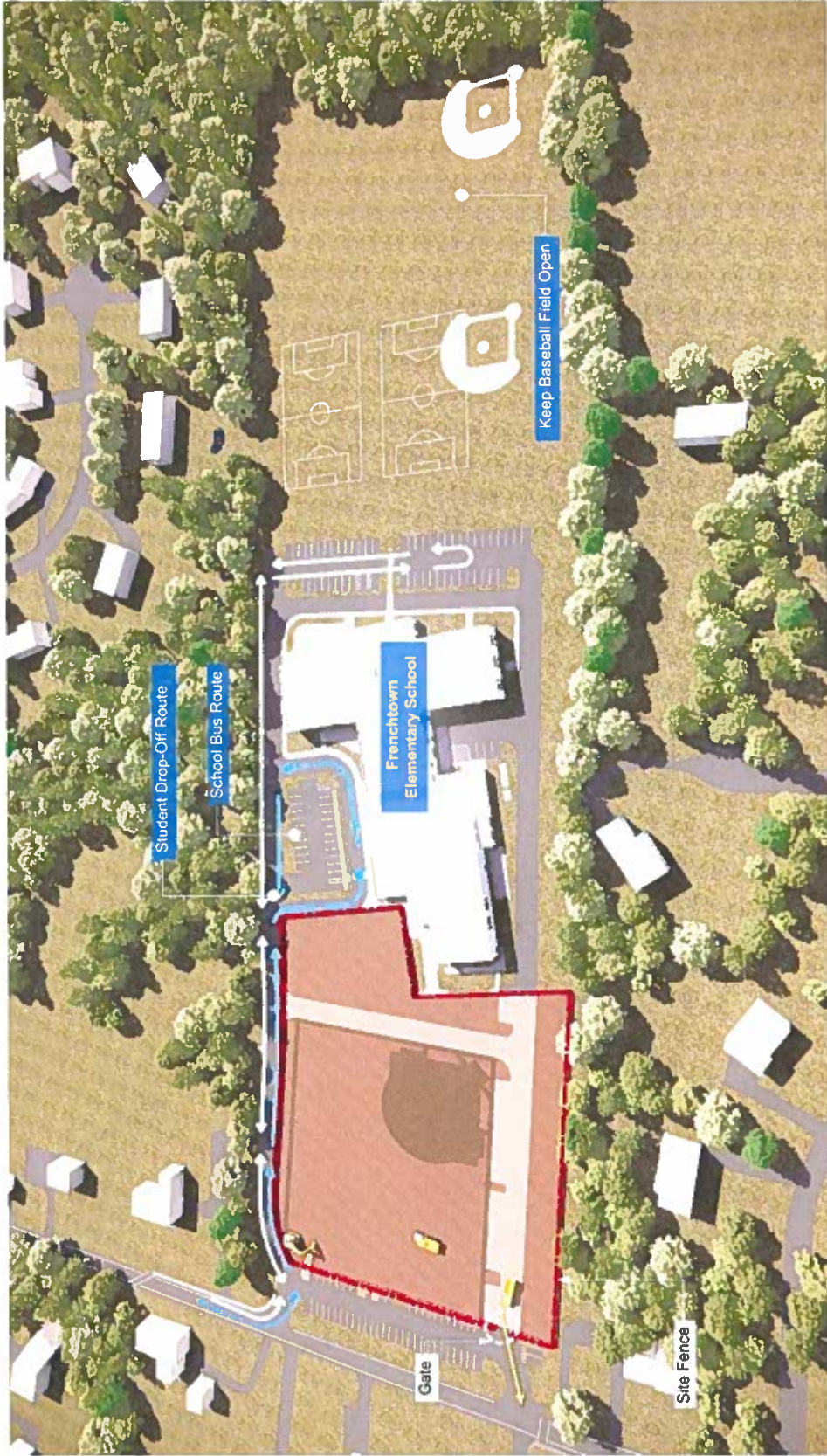
# Frenchtown Elementary - Demolition

July '27 - Dec '27



# Frenchtown Elementary - Field Install

Dec '27 – June '28



# Frenchtown Elementary – Project Complete

June '28

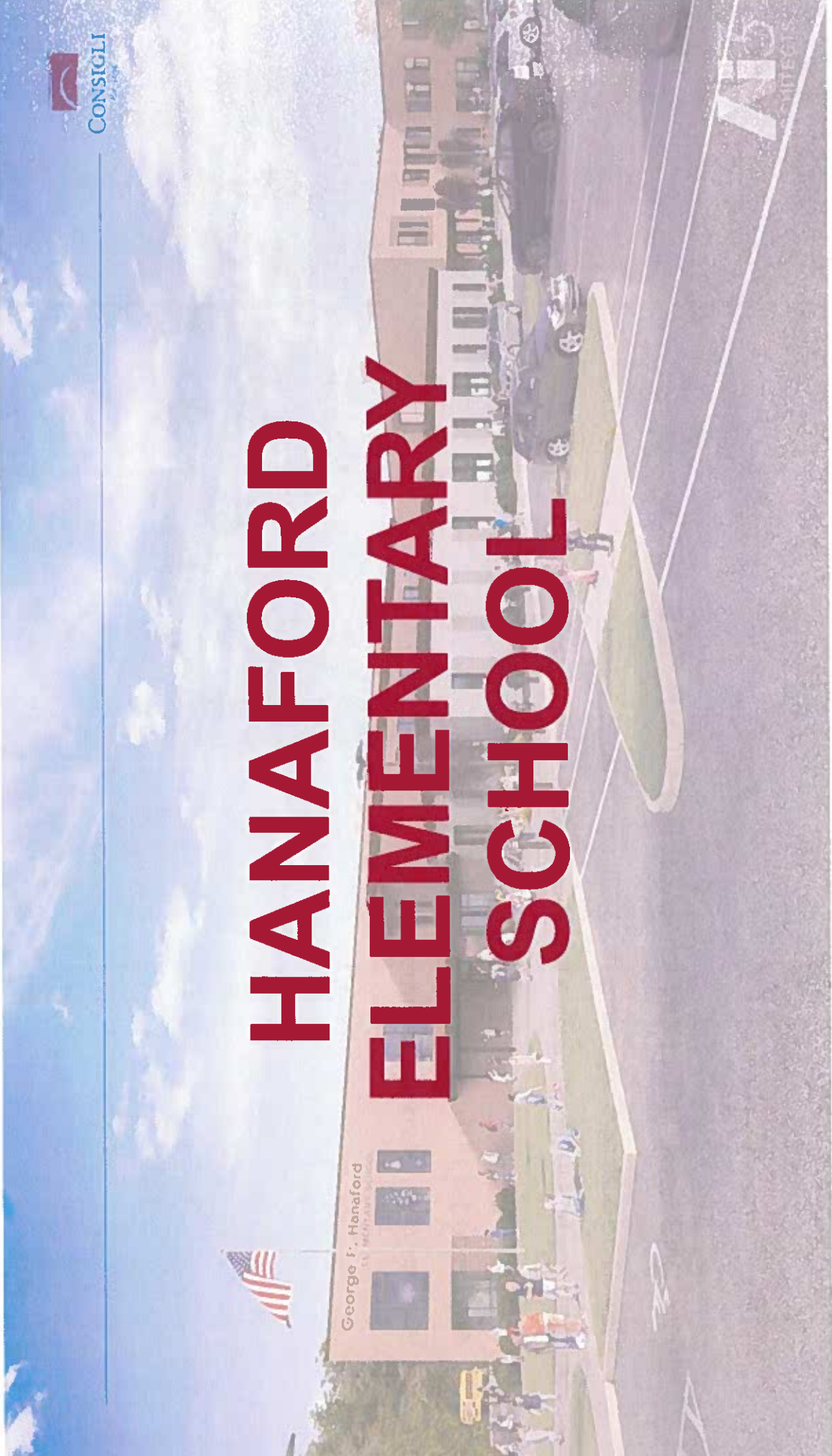


## Neighborhood Abutter Surveys – Frenchtown Elementary



- Notifications will be sent out to homes within the 300' radius on Tuesday, November 25th.
- Award will be made on 11/24 by SCC and TC.
- Individuals are encouraged to SIGN UP NOW via the physical sign-up sheet located near the door.
- All homes within the radius will receive a letter regardless if you have signed-up today.
- Instructions for scheduling an inspection will be contained in the letter for those who do not sign up today.

**Questions:** Reach out to Chris Spiegel at [cspiegel@leftfieldpm.com](mailto:cspiegel@leftfieldpm.com).



# HANAFORD ELEMENTARY SCHOOL



CONSIGLI

# Hanaford Elementary

## NEW CONSTRUCTION FOR 4-TRACK ELEMENTARY SCHOOL

- New school building is approximately 73,380 square feet
- Existing school is approximately 31,000 square feet
- 2-level structure
- Accommodates 1<sup>st</sup> thru 5<sup>th</sup> Grade
- Frenchtown and Hanaford are mirror images



# EGPS | Hanaford ES

site plan



# EGPS | Hanaford ES

## first floor plan

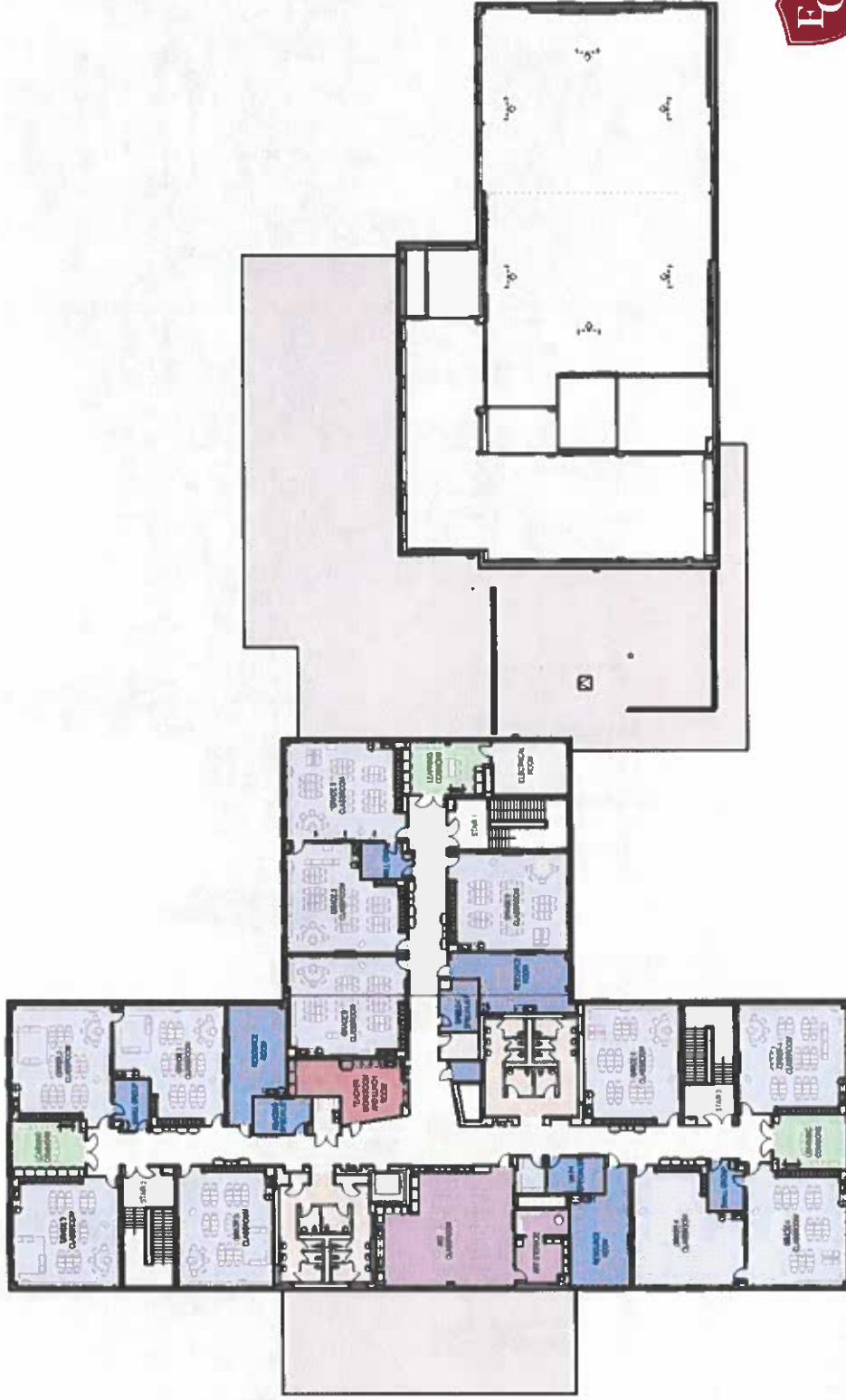
- CORE ACADEMIC
- SPECIAL EDUCATION
- HEALTH & PHYSICAL EDUCATION
- MEDIA CENTER
- ART & MUSIC
- STEAM & MAKER SPACE
- ADMINISTRATION & GUIDANCE
- MEDICAL
- DINING & FOOD SERVICE
- CUSTODIAL & MAINTENANCE
- CIRCULATION



# EGPS | Hanaford ES

## second floor plan

- CORE ACADEMIC
- SPECIAL EDUCATION
- HEALTH & PHYSICAL EDUCATION
- MEDIA CENTER
- ART & MUSIC
- STEAM & MAKER SPACE
- ADMINISTRATION & GUIDANCE
- MEDICAL
- DINING & FOOD SERVICE
- CUSTODIAL & MAINTENANCE
- CIRCULATION



EAST GREENWICH  
PUBLIC SCHOOLS



# EGPS | Interior Renderings

Hanaford ES Main Lobby & Student Commons



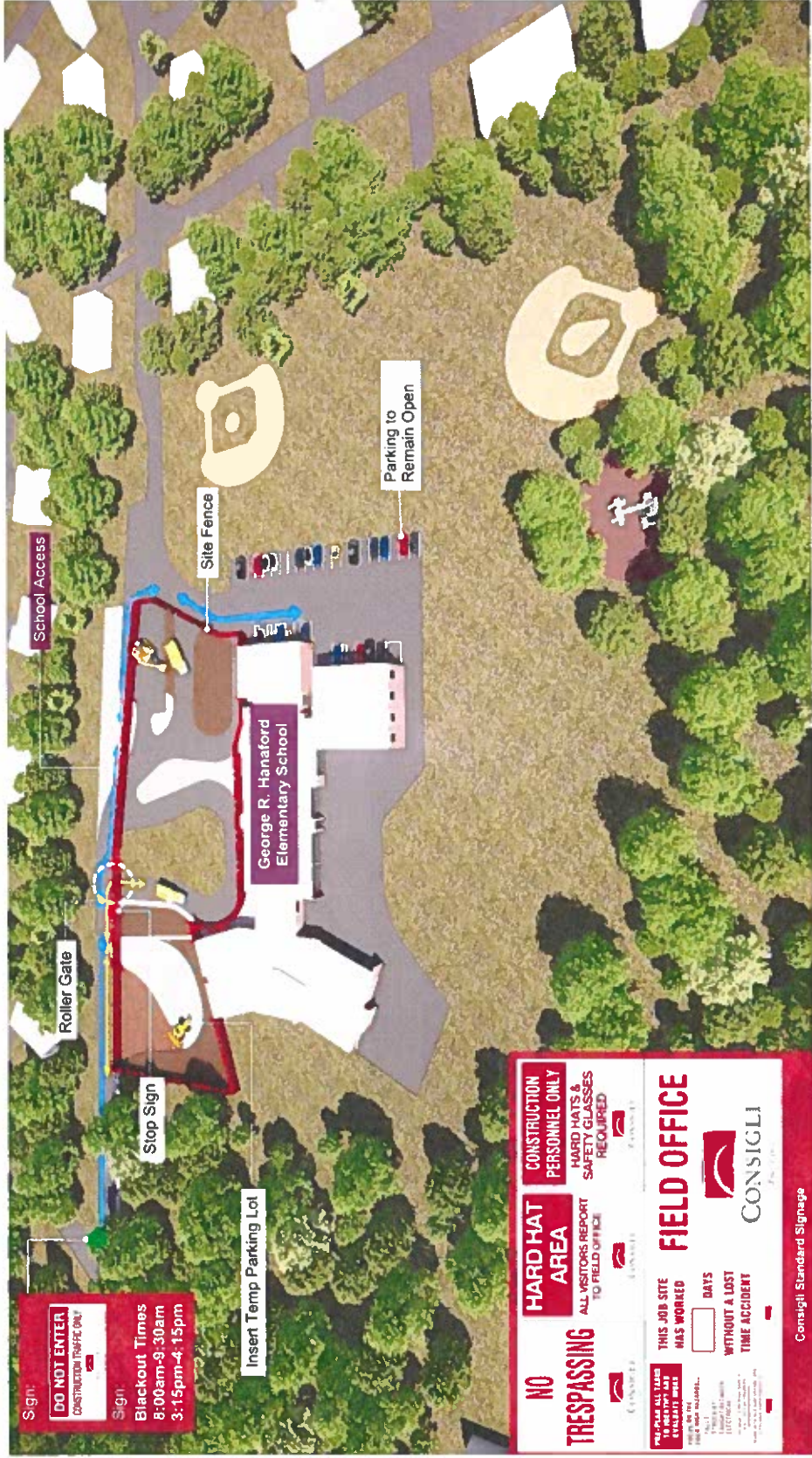
## Hanaford Elementary – Mobilization / Milestones



- **Enabling Mobilization – December '25**
  - Fence will start in early December
  - New parking lot will be installed in mid-December
  - Minimal impacts to parent and bus routes.
  - Jobsite enabling phase begins the week of January 5<sup>th</sup>
- **Excavation & Foundations – January '26 – May '26**
- **Structure & Façade - April '26 – November '26**
- **Interior Fitout – August '26 – May '27**
- **Building Turnover – July '27**
- **Demolition – July '27 – December '27**
- **Fields & Hardscape – December '27 – June '28**
- **Project Complete – June '28**

# Hanaford Elementary - Mobilization

Dec '25



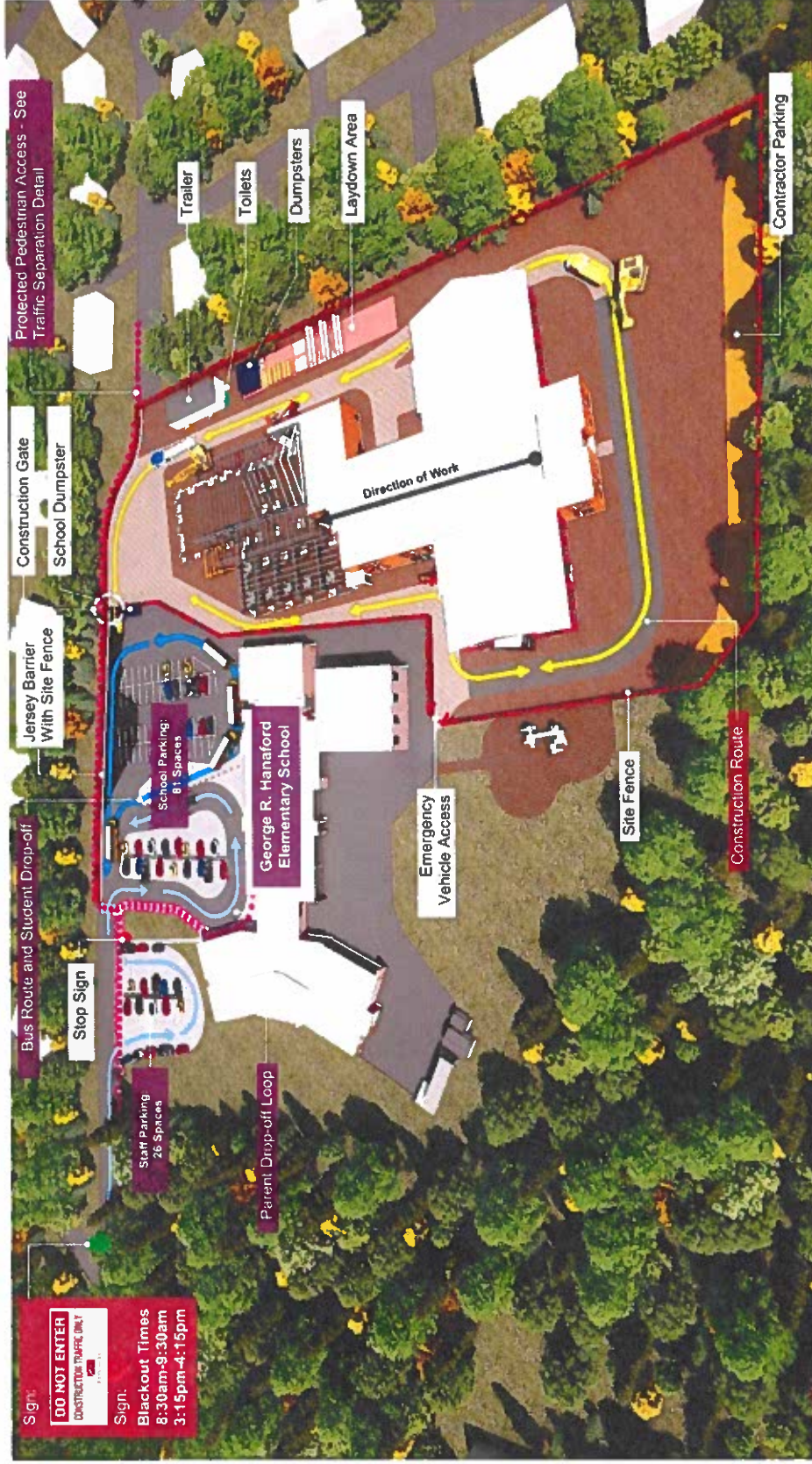
# Hanaford Elementary – Revised Parent Drop Off

Jan '26



# Hanaford Elementary – Structure & Fitout

Jan '26 – May '27



# Hanaford Elementary – Demolition

July '27 – Dec '27



# Hanaford Elementary – Field Install

Dec '27 – June '28



# Hanaford Elementary – Project Complete

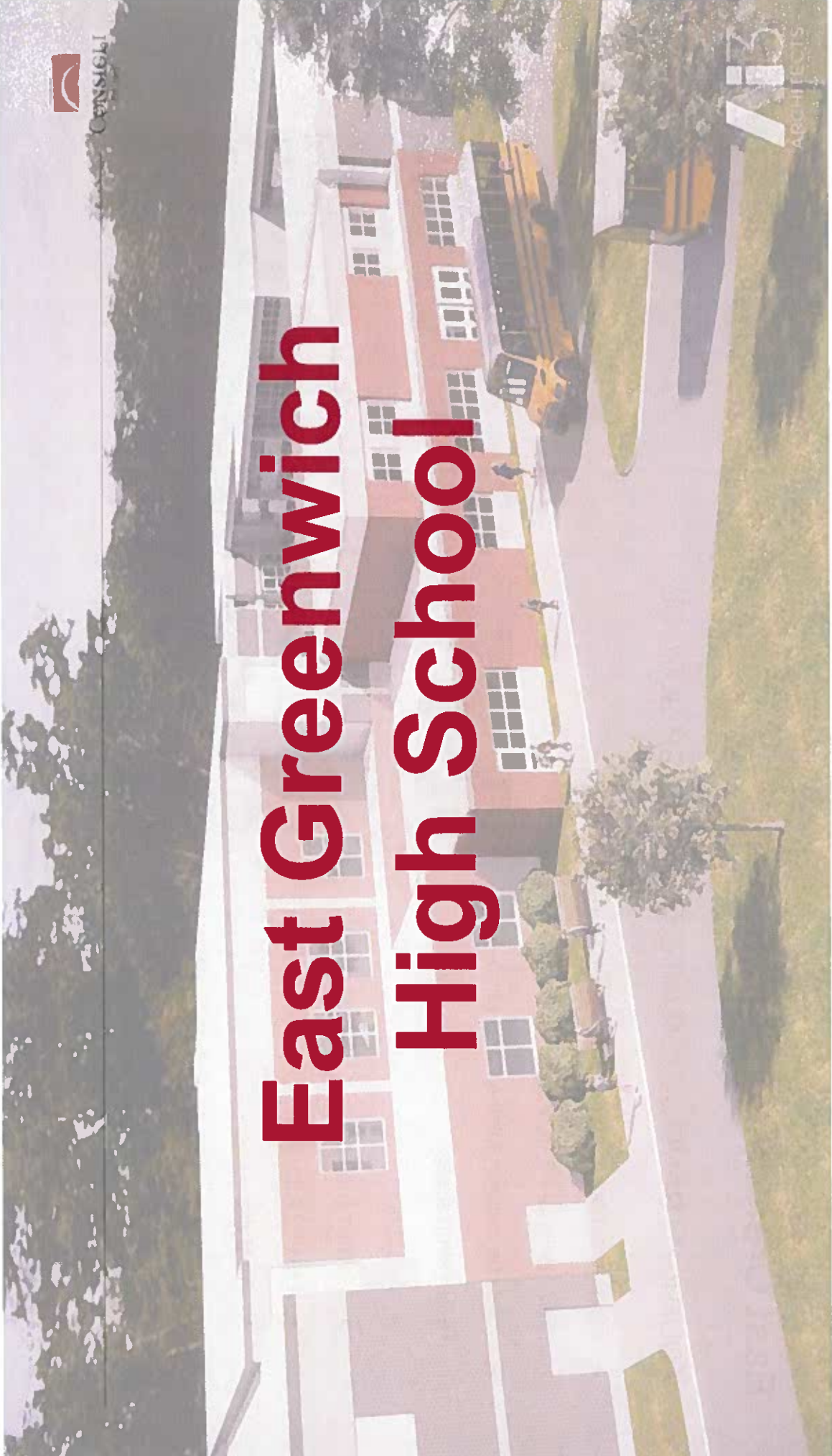
June '28



# Neighborhood Abutter Surveys – Hanaford Elementary



- Notifications will be sent out to homes within the 300' radius on Tuesday, November 25th.
- Award will be made on 11/24 by SCC and TC.
- Individuals are encouraged to SIGN UP NOW via the physical sign-up sheet located near the door.
- All homes within the radius will receive a letter regardless if you have signed-up today.
- Instructions for scheduling an inspection will be contained in the letter for those who do not sign up today.
- **Questions:** Reach out to Chris Spiegel at [cspiegel@lefffieldpm.com](mailto:cspiegel@lefffieldpm.com).



# East Greenwich High School



CENSIGHT

ARCHITECTS

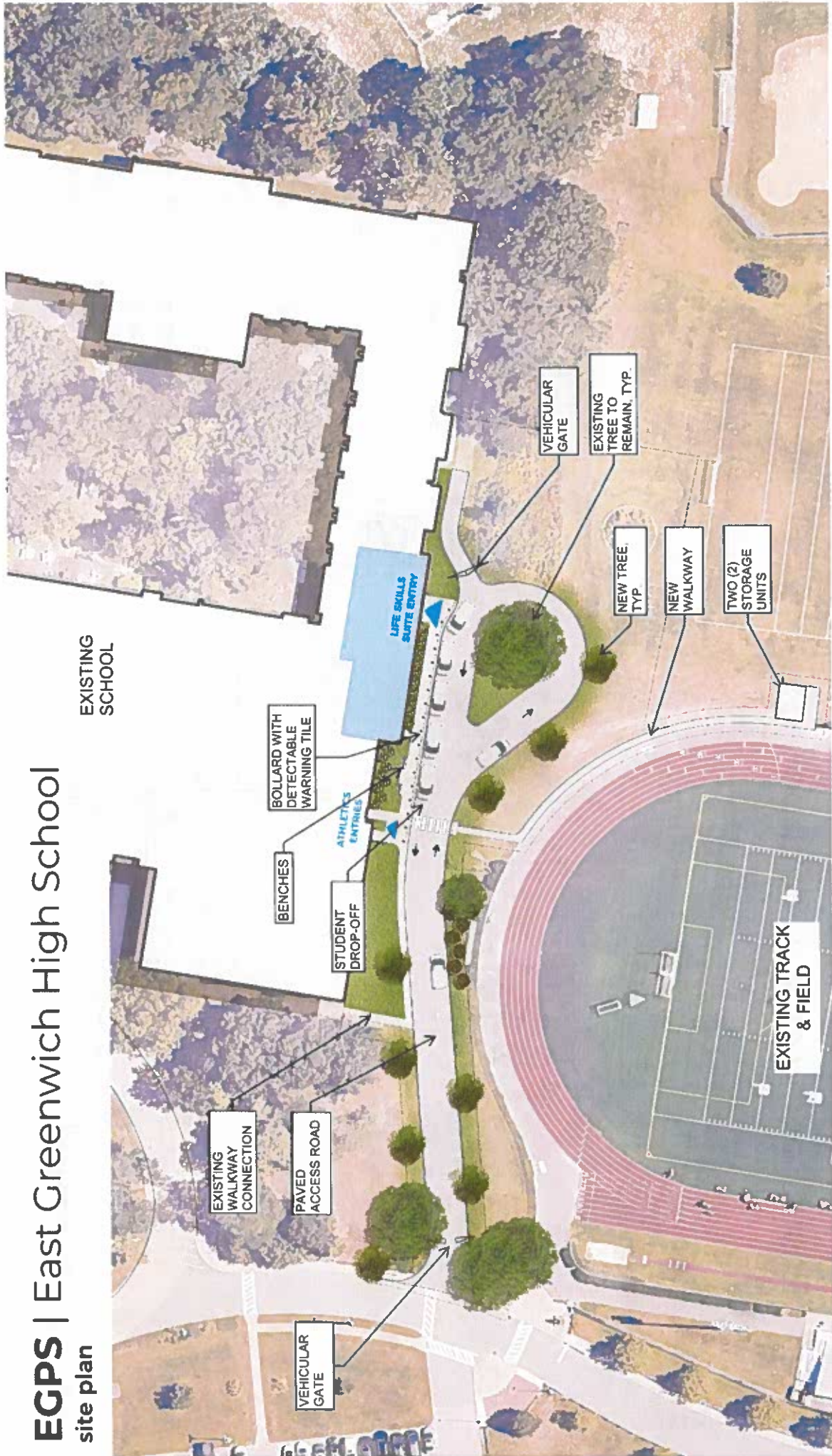
# East Greenwich High School

## ADDITION / RENOVATION OF EXISTING HIGH SCHOOL

- Existing school is approximately 160,400 square feet
- New Addition ~ 7,000 square feet
- Total Renovation Area 49,140 square feet
- Renovation areas:
  - Auditorium
  - Level 1 Athletics
  - Level 2 Athletics
  - Art Suite
  - Mechanical Equipment Upgrades



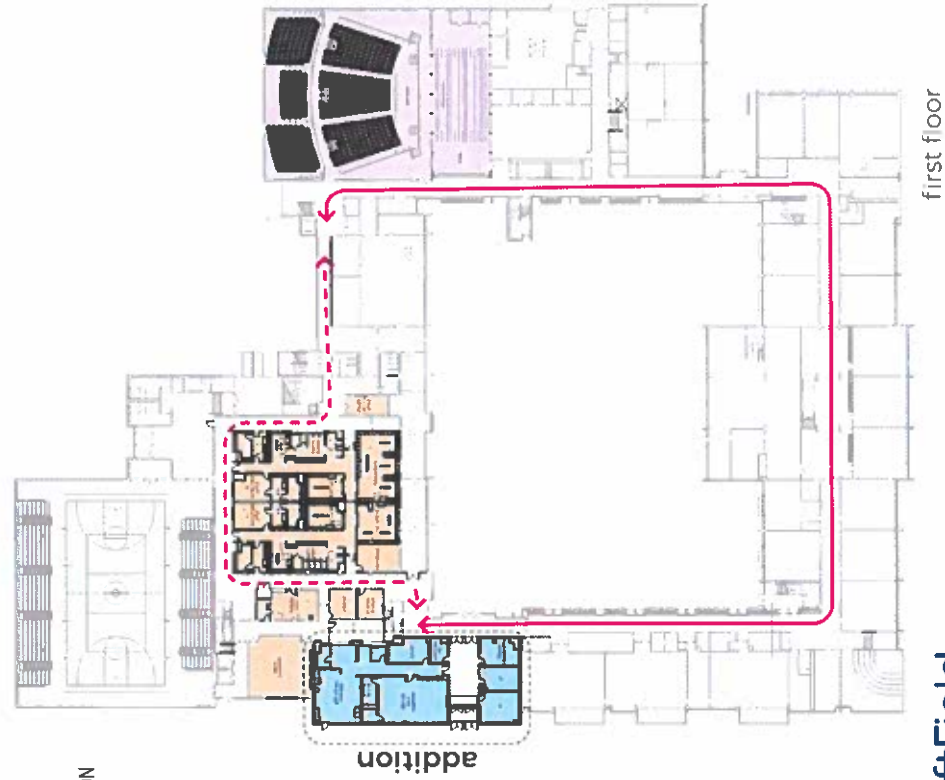
# EGPS | East Greenwich High School site plan



# EGPS | East Greenwich High School

## floor plans

- CORE ACADEMIC
- SPECIAL EDUCATION
- HEALTH & PHYSICAL EDUCATION
- ART & MUSIC
- CUSTODIAL & MAINTENANCE
- CIRCULATION

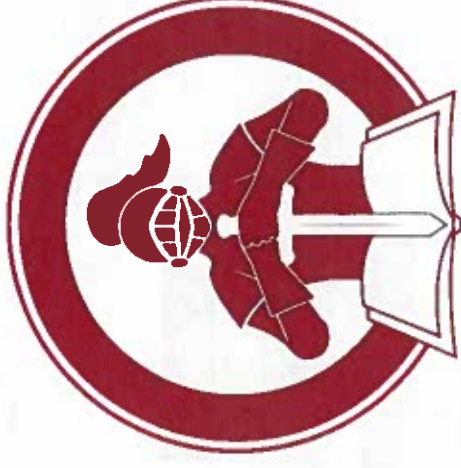


EAST GREENWICH  
PUBLIC SCHOOLS



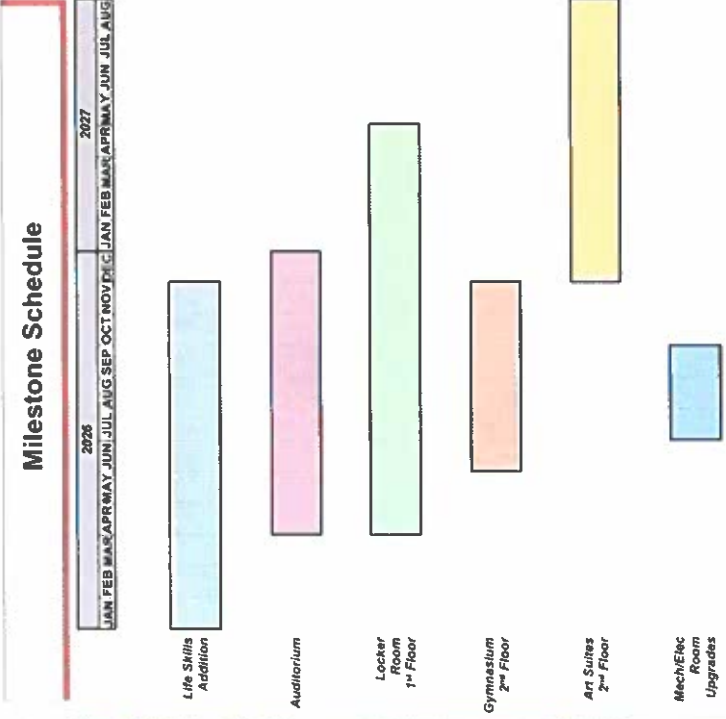
# East Greenwich High School – Mobilization Timeline

- Jobsite fence will be installed the week of Thanksgiving break
- Jobsite trailer will be delivered first week of December
- Traffic patterns from the school to the fields will be re-established:
  - Signage at interior gym doors
  - Exterior signage around fence line
- Jobsite enabling phase begins the week of January 5<sup>th</sup>

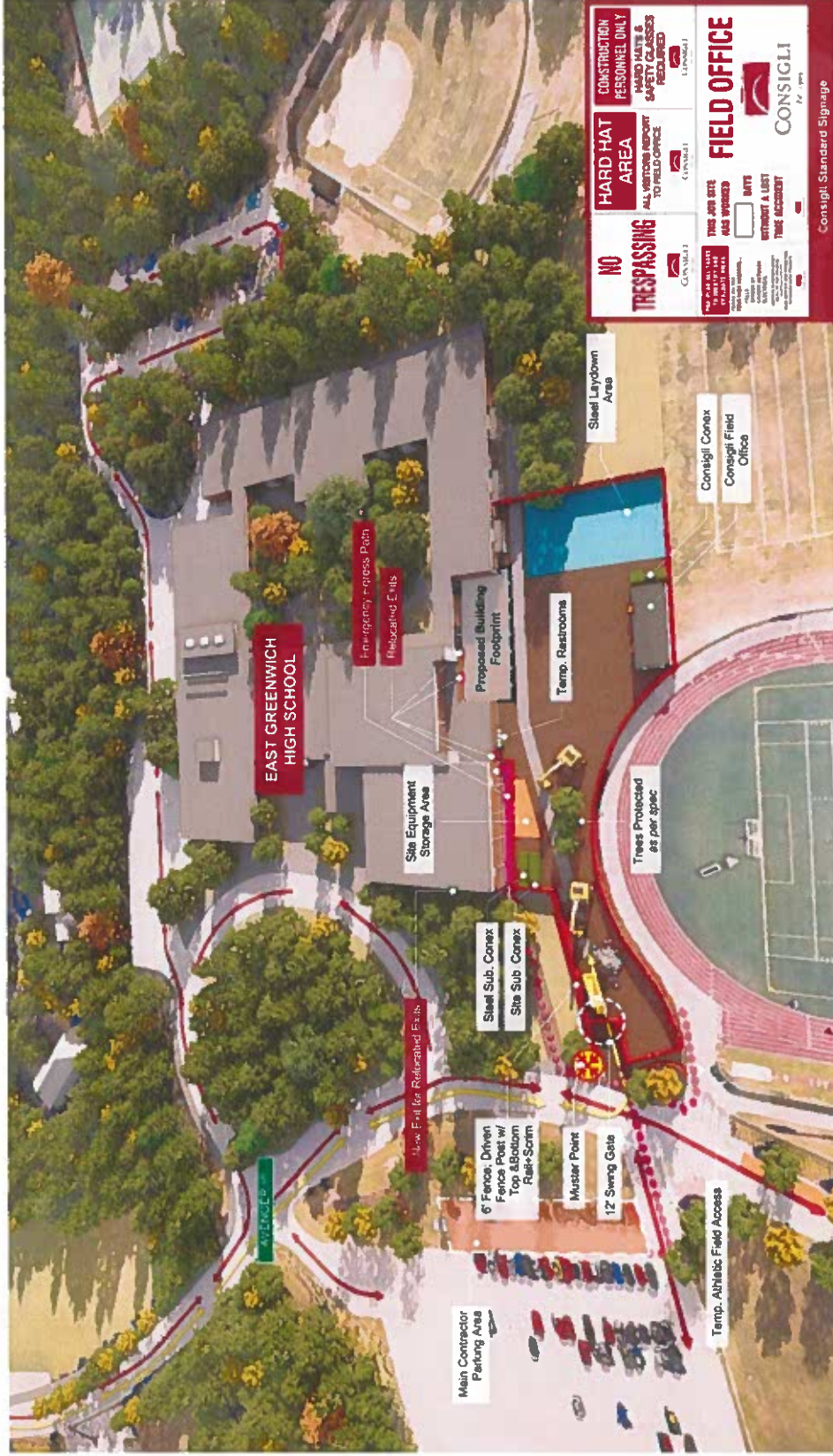


**EAST GREENWICH**  
HIGH SCHOOL

# East Greenwich High School – Milestone Schedule



# East Greenwich High School - Mobilization



Consigli Standard Signage

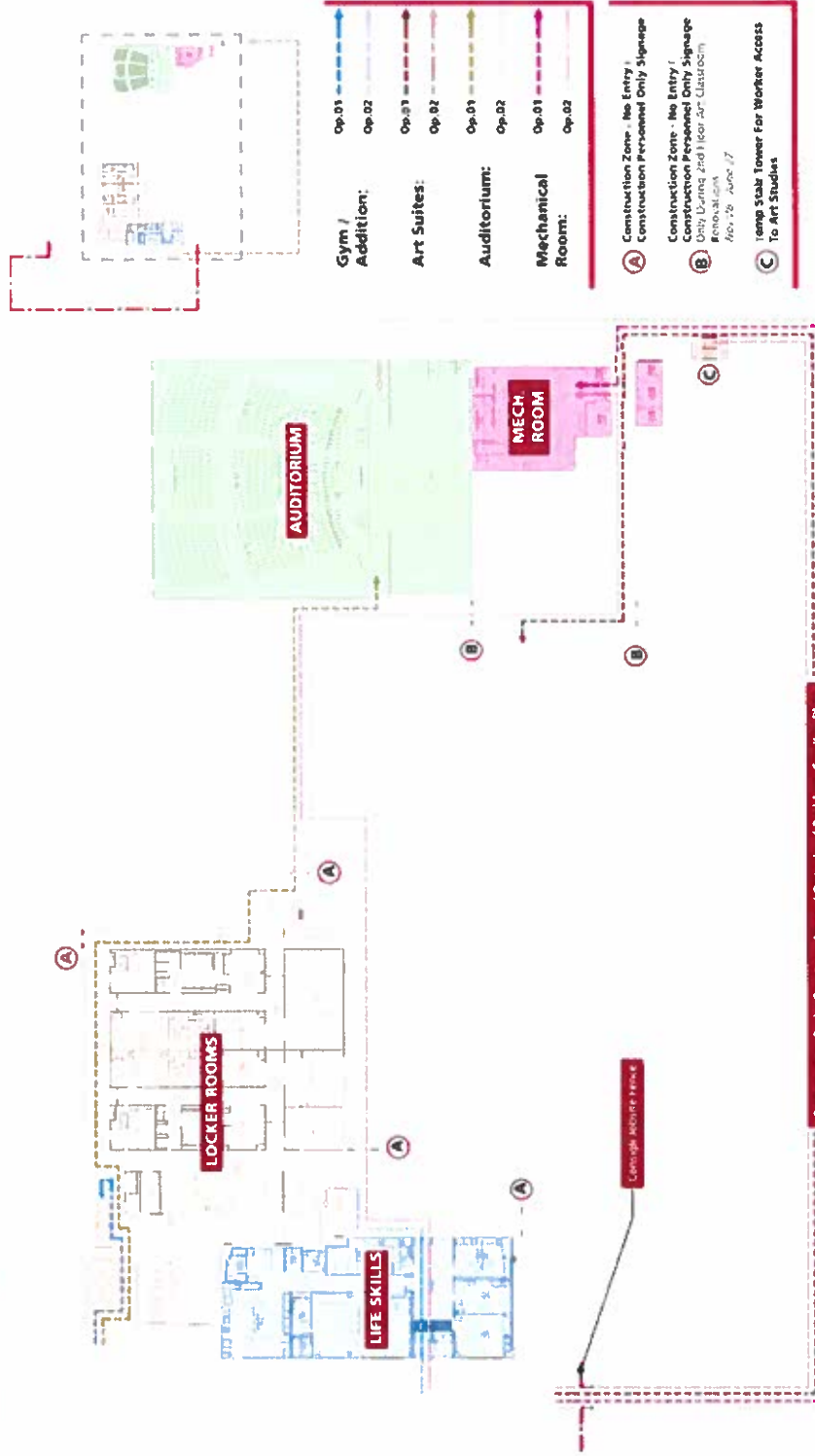
# East Greenwich High School – Worker Circulation Plan



East Greenwich Public Schools  
East Greenwich High School Addition



CONSTRUCTION  
CIRCULATION  
FIRST FLOOR PLAN



- Gym / Addition:**
  - Op.01
  - Op.02
- Art Suites:**
  - Op.01
  - Op.02
- Auditorium:**
  - Op.01
  - Op.02
- Mechanical Room:**
  - Op.01
  - Op.02

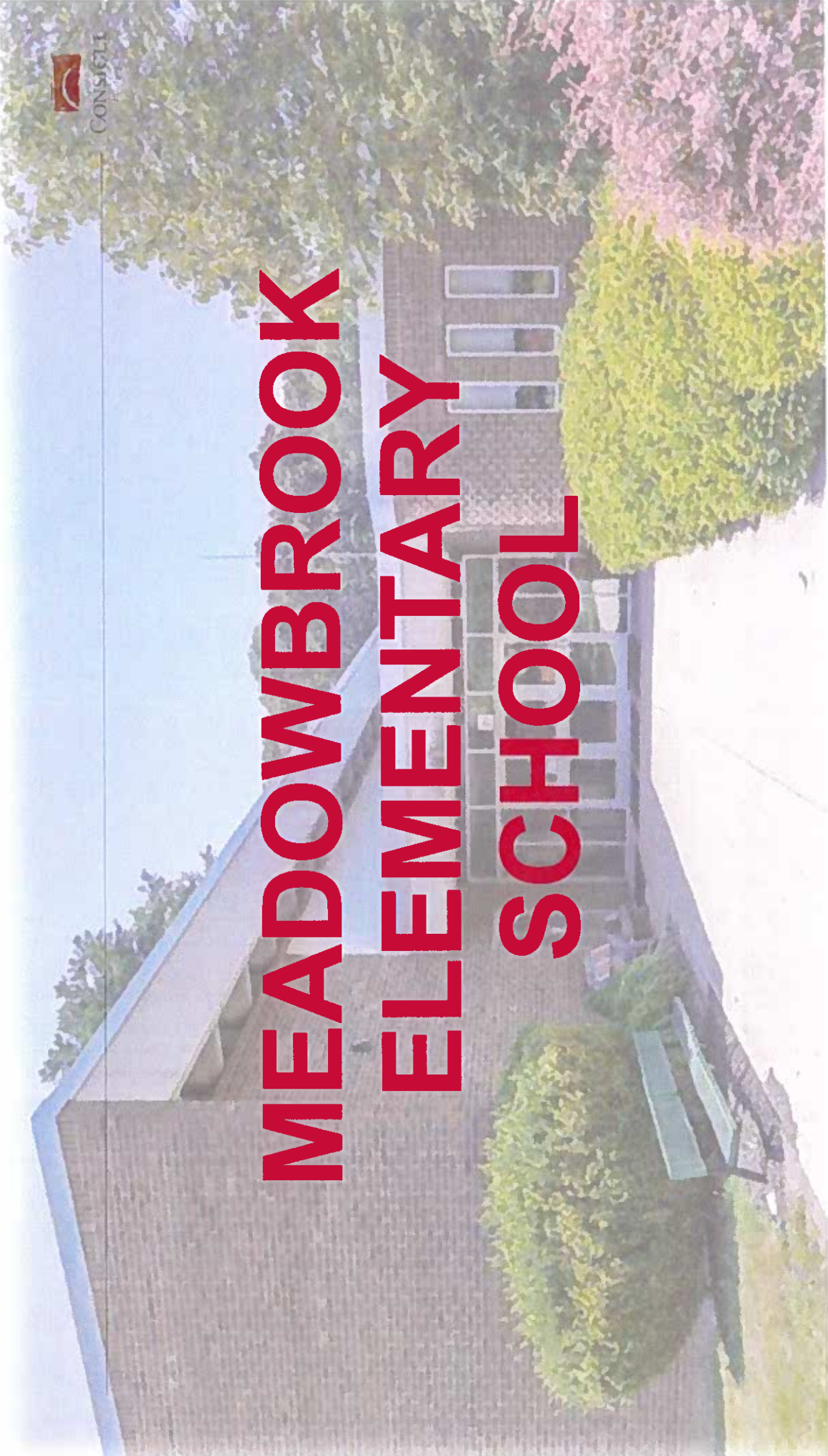
- A** Construction Zone - No Entry / Construction Personnel Only Signage
- B** Construction Zone - No Entry / Construction Personnel Only Signage Only During 2nd Floor Art Classroom Renovation Nov. 26 - June 27
- C** Temp Stair Tower For Worker Access To Art Studios

Construction Paths Continue Around Outside of Building. See Key Plan

## Neighborhood Abutter Surveys – High School

---

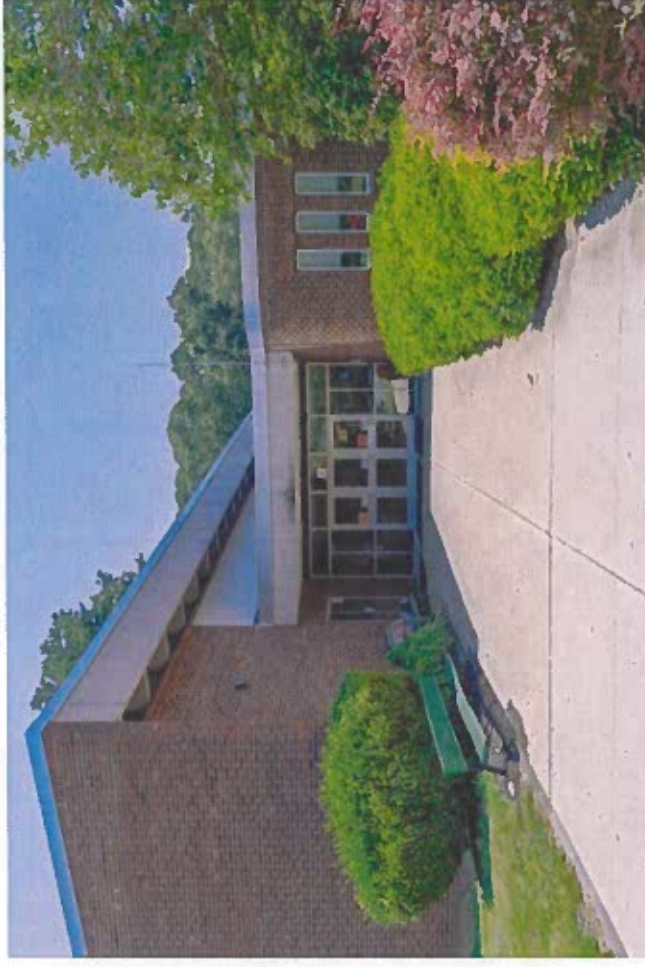
- Notifications will be sent out to homes within the 300' radius on Tuesday, November 25th.
- Award will be made on 11/24 by SCC and TC.
- Individuals are encouraged to SIGN UP NOW via the physical sign-up sheet located near the door.
- All homes within the radius will receive a letter regardless if you have signed-up today.
- Instructions for scheduling an inspection will be contained in the letter for those who do not sign up today.
- **Questions:** Reach out to Chris Spiegel at [cspiegel@leftfieldpm.com](mailto:cspiegel@leftfieldpm.com).



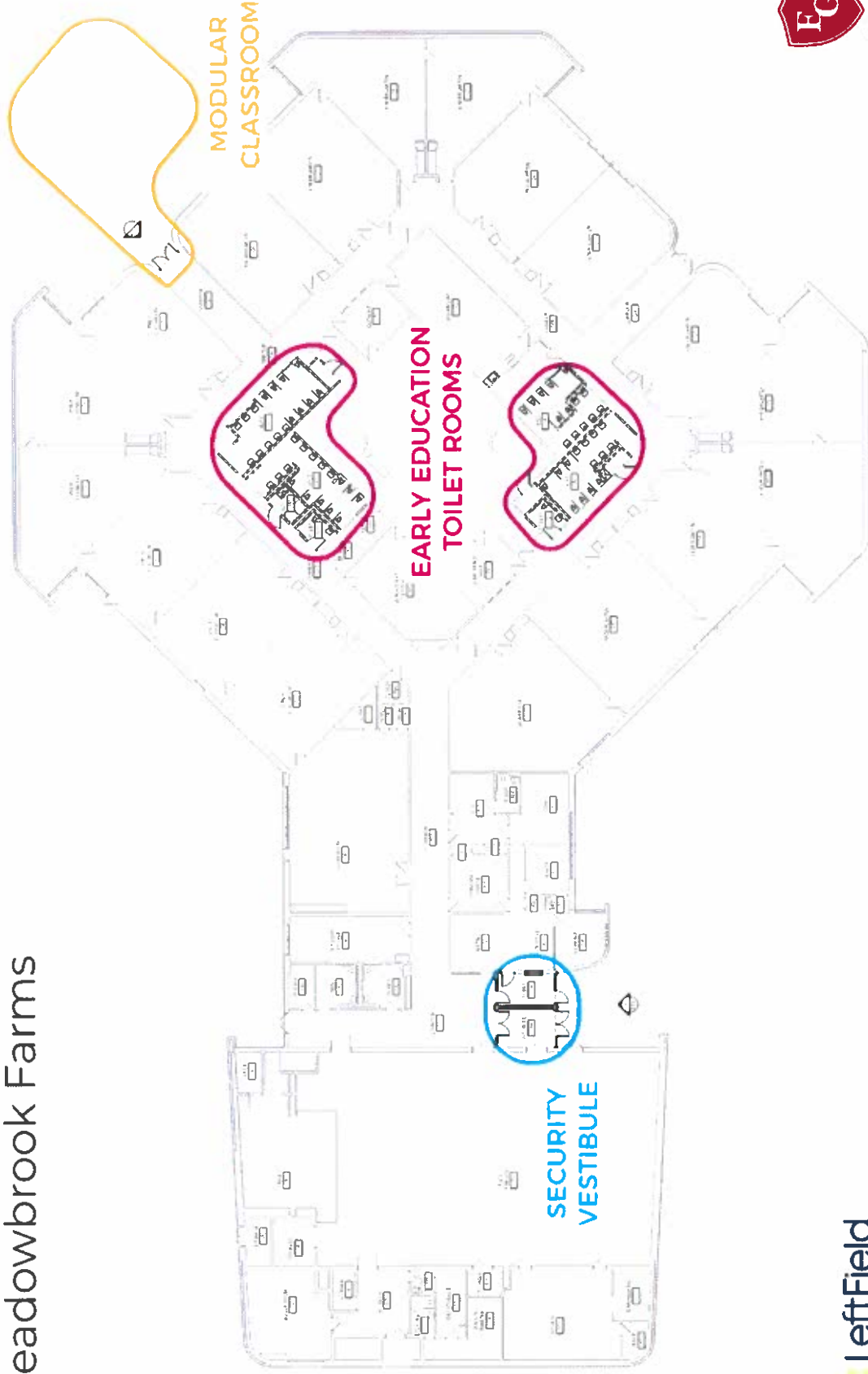
# MEADOWBROOK ELEMENTARY SCHOOL

# Meadowbrook Elementary

- Minor capital improvements and interior renovations.
- Areas include:
  - Interior security vestibule replacement
  - Code-driven changes for lavatories
  - Demolition of modular classroom
- **This will be priced as an add alternate.**



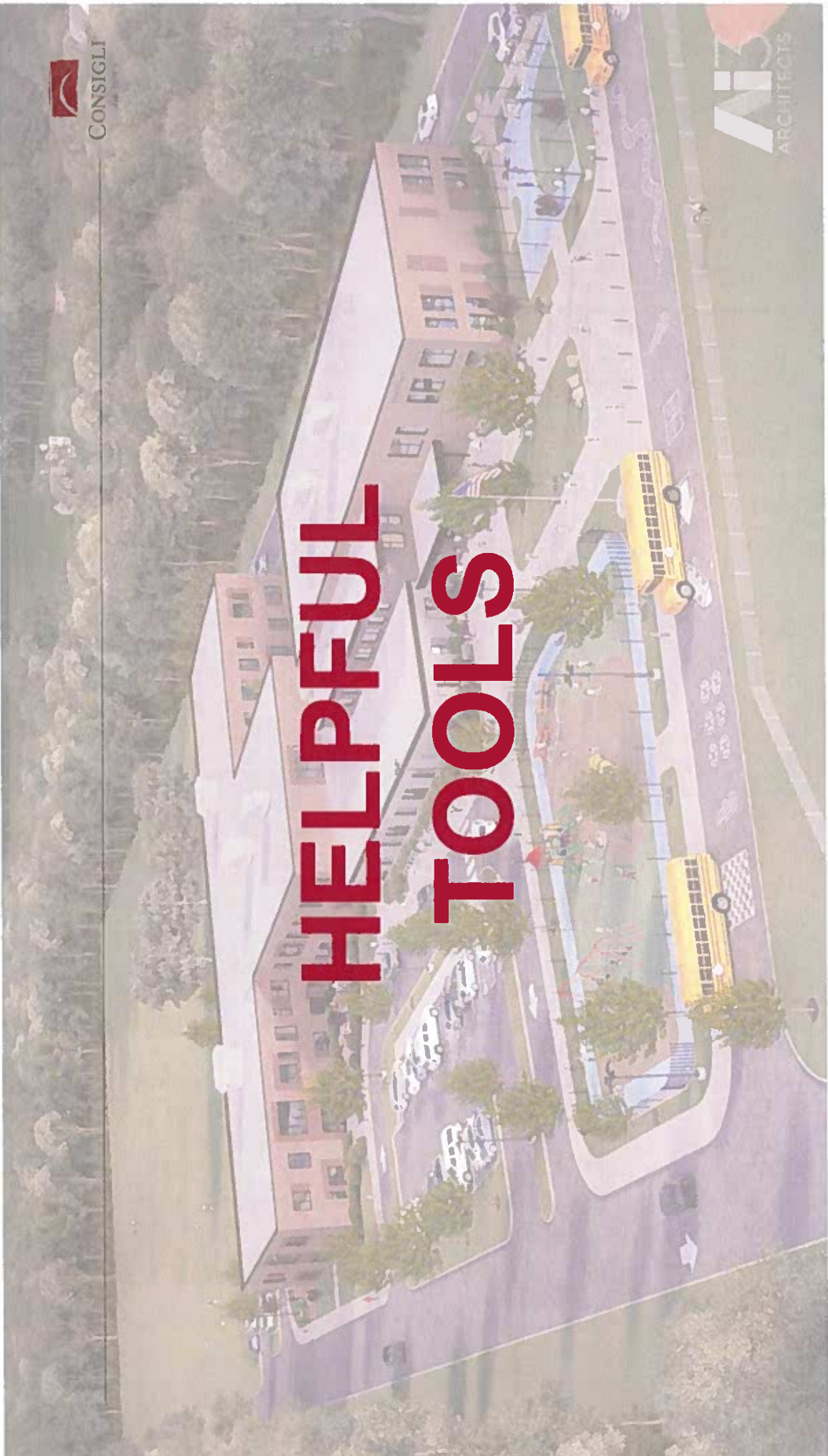
# EGPS | Meadowbrook Farms





CONSIGLI  
ARCHITECTS

# HELPFUL TOOLS



# District Wide Project Website



HOME EAST GREENWICH HIGH SCHOOL FRENCHOWN HANAY OKD CONTACT US

East Greenwich



## EAST GREENWICH HIGH SCHOOL

### Project Information

The project involves an occupied, phased renovation of the existing EGHS facility, which will include:

- A new addition to support the Life Skills program, featuring an apartment, vocational/technical lab, PT and OT spaces, and additional classrooms.
- Renovation of locker rooms, team rooms, and athletic storage areas.
- Reconfiguration of the Upper Gym to include a basketball court and new Fitness/Adaptive PE space.
- Thermal comfort, acoustic, and code upgrades to the Auditorium.
- Renovation and reconfiguration of the Arts Suite, including Ceramics, Photography, and Fashion Classrooms.
- General Mechanical, Electrical, Plumbing, and Code Upgrades.

For more information on **Design and Construction Logistics**, please click the **LEARN MORE** button below.

[www.eastgreenwichprojects.com](http://www.eastgreenwichprojects.com)



CONSIGLI  
ARCHITECTS

# QUESTIONS?

CONSIGLI  
ARCHITECTS

